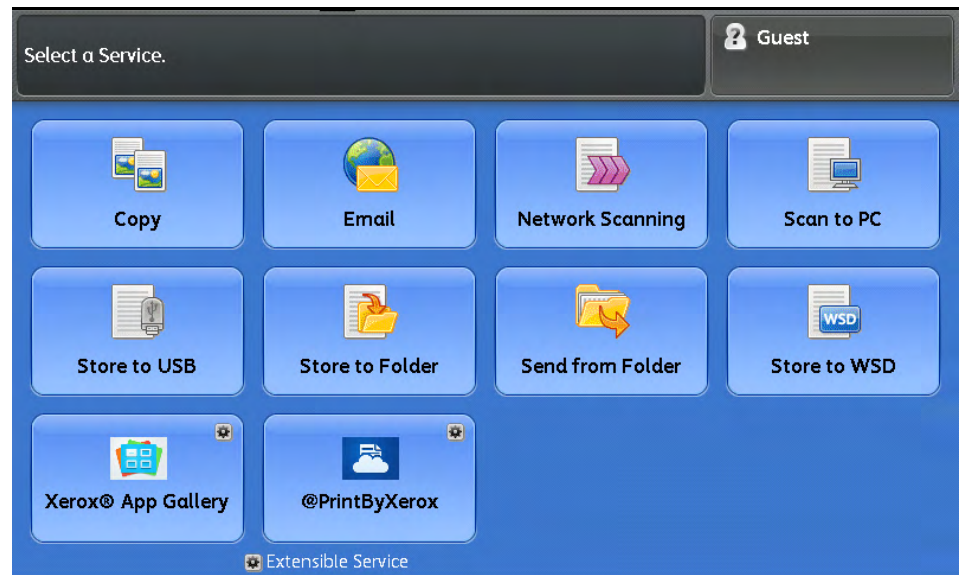


Integrated Server for the Xerox® PrimeLink® C9065/C9070 Printer

Modernize the way you work.

With the combination of the Xerox® PrimeLink® C9065/C9070 Printer and the Integrated Color Server, powerful performance is at your fingertips. Engineered for high-end office applications, it combines world-class color and workflows for transformative results.



Extend your capabilities with apps from the Xerox App Gallery.

- Tailor your device to work the way you do with the ever-evolving selection of innovative apps available on the Xerox App Gallery.
- Increase your opportunities with an expansive media selection — including Extra Long Sheet (XLS) for creative banner printing — and inline finishing capabilities ranging from stapling and hole-punching to folding for presentations, brochures, reports, and newsletters.
- Use Xerox® Standard Accounting Feature and internal auditing to track device usage, set limits, and control costs.
- Customize your print driver settings to save on specific applications — such as always printing emails in black and white.
- Maximize your productivity by performing scan, print, copy, fax, and file routing operations simultaneously.
- Easily share files or introduce electronic archiving with powerful scan capabilities. Text-searchable files make retrieval simple. And compression technology reduces network load for faster transmission.
- Automate document routing to predefined locations such as email addresses with job flow sheets.
- Enjoy automatic installation, troubleshooting, feature setup, and upgrades with the Xerox® Embedded Web Server.
- Replenish supplies automatically — Automated Meter Readings (AMR) collects and submits readings and Automatic Supplies Replenishment (ASR) orders ink whenever supplies run low.
- Securely print from any email-enabled device with Xerox @PrintByXerox App. No software or app to download. No IT intervention. Just send an email and print at the device.

Integrated Server for the Xerox® PrimeLink® C9065/C9070 Printer

HARDWARE SPECIFICATIONS

- Hard Drive: 320 GB Hard Disk Drive
- Processor: 1.6 GHz Dual-core
- Memory: 4 GB RAM
- OS Platform: Linux
- 10.4-inch color touchscreen flat panel display
- 10/100/1000MBT/sec standard

PRINT FEATURES

- Automatic two-sided
- Secure print
- Delay print
- Sample set
- Booklet creation
- Cover selection
- Paper selection by attribute
- N-up
- Watermarks
- Banner sheets
- Output tray selection
- Standard USB
- Paper Catalog (up to 400 entries)

STANDARD APP CAPABILITIES

- Xerox App Gallery
- Xerox @PrintbyXerox App

FAX

- Optional Walk-up PSTN fax (one-line and two-line options) with internet fax
- Fax over IP (T.38) Kit
- Network Server Fax Enablement Kit features:
 - Fax
 - Fax Forward
 - Two-sided Send and Receive
 - Fax up to 11 x 17 in./A3

ACCOUNTING

- Xerox® Standard Accounting Feature (copy, print, fax, scan)
- Enabling color access control
- Network Accounting Enablement Kit

CLIENT ENVIRONMENTS SUPPORTED

- Windows 7 SP1 (Service Pack 1) (32- and 64-bit), Windows 8 (32- and 64-bit), Windows 8.1 Update 1 (32- and 64-bit), Windows 10 (32- and 64-bit), Windows

Server 2008 SP2 (32- and 64-bit), Windows Server 2008 R2 SP1 (32- and 64-bit), Windows Server 2012 (32- and 64-bit), Windows Server 2012 R2 (32- and 64-bit), Windows Server 2016 (64-bit), Windows Server 2019 (64-bit)

- Mac OS: Mac 10.13, Mac 10.14, Mac 10.15
- Unix and Linux: Red Hat Enterprise Linux 8 x 64, Red Hat Enterprise Linux 7.6 x 64, Fedora Core 29 x 32, Fedora Core 29 x 64, Fedora Core 30 x 32, Fedora Core 30 x 64, Ubuntu 18.04 x 32, Ubuntu 18.04 x 64, Ubuntu 19.10 x 64, Ubuntu 19.04 x 64, OpenSuse 15.1 x 64, Solaris 11.4 x 86, Solaris SPARC 11.4, Power PC AIX 7.2, Itanium HP-UX 11i v3 Update 18
- Citrix: Citrix Virtual Apps and Desktops 7 1909, Citrix XenApp 7.15, Citrix XenDesktop 7.15
- Novell: Open Enterprise Server 2018 SP1, WHQL Certification

PDLs AND DATA FORMATS

- PDF, XPS®, PCL® 6, HP-GL2 (direct submission), TIFF, JPEG
- Adobe® PostScript® 3™ (highly recommended option)

SCAN AND COPY

A robust set of scan/copy functions plus:

- Thumbnail preview
- Scan to: Home, Desktop WIA, Desktop TWAIN, Mailbox, FTP, sFTP (via EIP), USB Storage Device, Remote Printer, Fax Server, SMB v3.1.1, Network Scanning
- Scan to: Multiple Destinations
- Scan via: SMB, HTTP, HTTPS
- High compression or quality file size settings
- Searchable PDF

SECURITY

- Access Controls
- AES 256-bit Encryption
- Audit Log
- Certificate Path Validation
- Certificate Revocation List (CRL)/ Status Protocol (OCSP)
- Common Criteria Certified
- NIST 800-171r1**



- Detection of External Program Falsification (XCP Plug-in)
- Domain Filtering
- FIPS 140-3
- Firmware Verification
- Immediate Disk Overwrite
- IP Address Filtering
- IPsec
- Network Authentication
- Self-signed Certificates
- Role-based Permissions
- Secure Print
- Security Certificate Management
- SIPRNet
- Smart Card Enablement (CAC/PIV/.NET)
- SNMPv3
- Status Protocol (OCSP)
- TLS 1.3

OTHER OPTIONS

- USB Direct Print, Media Card Reader, Common Access Card Enablement Kit, Accounting Options
- Xerox Extensible Interface Platform® Enabled, Foreign Device Interface
- Mobile/Smartphone Printing

ELECTRICAL REQUIREMENTS

- Printer: 110-127 VAC, 50/60 Hz
- Options: 100-240 VAC, 50/60 Hz
- Optional Feeding/Finishing:
 - Each module requires 100-240 VAC, 50/60 Hz power

PRINTER DIMENSIONS

Base Unit w/ Offset Catch Tray:

- Height: 54.8 in./1,391.5 mm
- Width: 62 in./1,574 mm
- Depth: 31.6 in./803.5 mm

**US only (DOD security compliance)

For more information on the Xerox® Integrated Color Server, please contact your Xerox representative, call **1-800-ASK-XEROX**, or visit us online at **xerox.com**.